



PYLOX

COLLECTION

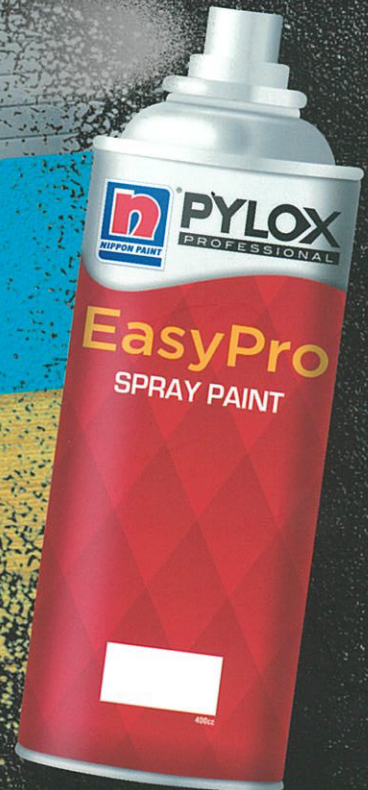
EASY & DURABLE
SPRAY PAINT



Metal

Wall

Wood



Fast application • Uniform coverage • Smooth finish
• Ideal for painting hard-to-reach areas

PRODUCT SELECTION



Pylox EasyPro



High Durability
持久耐用



High Quality-Suitable For Exterior
高品质且适用于户外



Good Hiding With High Concentration
良好的遮盖力及高密度



Excellent Colour Retention
优越的保色性



CFC Free
不含CFC



Acrylic Finish Topcoat

High performance exterior paint for concrete, plastered walls and asbestos
优越外墙漆适用于混凝土、石膏墙及石棉

- Alkaline resistance 抗碱性
- Weathering resistance 防恶劣气候

- High Gloss 高光泽
- Soft Matt 柔哑光



9000 Gloss Finish

A touch of brilliant gloss for all wood & metal surfaces
使木质及金属表面产生耀眼亮丽的光泽效果

- Fungus resistant 抗真菌
- High durability 持久耐用

- High Gloss 高光泽



Micaceous Iron Oxide (MIO)

Stunning metallic matt finish for metal surfaces
极致金属哑光效果，适用于金属表面

- Weathering resistance 防恶劣气候
- Chemical resistance 抗化学物

- Metallic Matt 金属哑光



Timber Finish

Easy-to-apply pigmented varnish colours to wood surfaces, highlighting the natural wood grain
易于使用的清漆，给予木材表面色彩，使天然木纹更加耀眼夺目

- Durable & flexible 耐用及具伸缩性
- UV and weathering resistance 防紫外线及耐候性

- Satin 丝光



Slate Finish

Enhances the natural beauty of slates, natural stone and cementitious substrates
加强石材及水泥表面的天然纹理

- Resistant to dirt, fungus & algae 抗尘埃、真菌及青苔
- UV Protection 防紫外线

- Clear Gloss 透明光泽
- Clear Satin 透明丝光



Red Oxide Primer

Outstanding anti-corrosion primer for long term protection
优越的抗腐蚀性，提供长期保护

- Good resistance to abrasion & mechanical damage 良好的抗磨损及机械损坏性能
- Excellent adhesion 卓越附着力



Pylox LAZER



Easy To Use
容易使用



Quick Dry
快速干透



Suitable For
DIY Projects
适用于DIY用途



Ozone
Friendly
不损害臭氧层



CFC Free
不含CFC



Pylox LACQUER



Specially Formulated For
Reconditioning Purposes
特制配方适用于翻新用途



Good Hiding With
High Concentration
良好的遮盖力及高密度



Good Solvent
Resistance
良好的耐溶剂性



Excellent Colour
Uniformity
优异的色彩均匀度



CFC Free
不含CFC



SOLID COLOURS



Acrylic Topcoat Finish : Ideal for Concrete & Masonry Walls 适用于混凝土及石墙 | 9000 Gloss Finish : Ideal for Wood & Metal Surfaces 适用于木材及金属表面

For more colour selection,
kindly refer to Nippon Paint
Colour Creations Palette
(Only for Pylox EasyPro Series).
请参阅 Nippon Paint Colour
Creations Palette 以获取更多的
颜色(只限于 Pylox EasyPro 系列)。



Grain Yellow **58**



Tangerine **51**



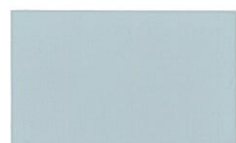
Light Pink **10**



Violet **20**



Matcha Green **60**



Silver Grey **43**



Wool Beige **55**



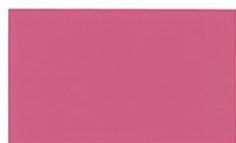
Mahogany **63**



Art Yellow **06**



Jialing Red **13**



Peach Red **11**



Diamond Blue **23**



Leaf Green **30**



Haier Grey **41**



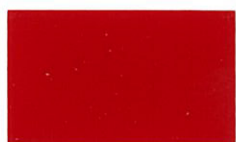
Lily **65**



Mission Brown **50**



Medium Yellow **07**



Orange Red **14**



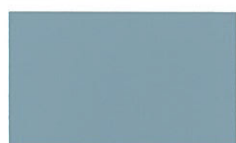
Light Violet **59**



Isuzu Blue **24**



Light Green **33**



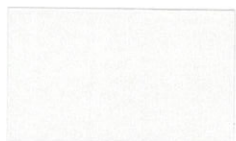
Light Grey **40**



Cream **54**



Deep Blue **49**



Pearl White **04**



Deep Yellow **08**



Scarlet **16**



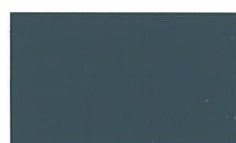
Medium Violet **19**



Sky Blue **22**



Gem Green **27**



Deep Grey **46**



Ivory **53**



Matt Black **47**



Cream White **05**



Orange Yellow **09**



Deep Red **17**



Deep Violet **18**



Light Sky Blue **21**



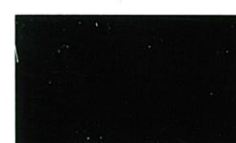
Post Green **28**



Grey **45**



Brown **52**



Black **48**

Matt White 03 and Matt Black 47 are not available in Acrylic Topcoat Finish and 9000 Gloss Finish.
Acrylic Topcoat Finish 和 9000 Gloss Finish 不备有 Matt White 03 和 Matt Black 47。
All colours shown in this colour card are as close to actual Nippon Paint colours as modern printing techniques permit.
根据现代印刷技术允许, 以上所有显示颜色与 Nippon Paint 的真实颜色相近。

METALLIC GLOSS

LAZER



Green Gold **704**



Solid Gold **710**



Gold **705**



Red Gold **712**



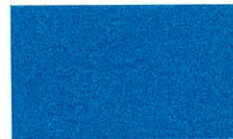
Flash Gold **706**



Flash Red **714**



Flash Violet **703**



Medium Blue **702**



Silver Light Green **707**



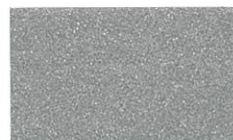
Flash Green **713**



Silver **42▲**



Distinguished Silver **701**

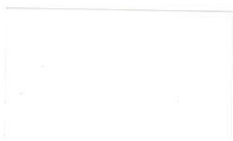


Sparkle Silver **711**

▲ Refer to solid colours pricing. 请参考 solid colours 定价。

FLUORESCENT

LAZER



Fluorescent White **607**



Fluorescent Yellow **600**



Fluorescent Apricot **608**



Fluorescent Orange **601**



Fluorescent Red **602**



Fluorescent Pink **603**



Fluorescent Magenta **609**



Fluorescent Violet **604**



Fluorescent Blue **606**



Fluorescent Green **605**

CANDYTONE

LAZER



Bright Chrome **700**



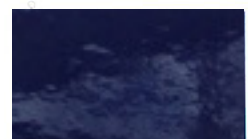
Candy Red **801**



Candy Green **802**



Candy Gold **803**



Candy Blue **804**

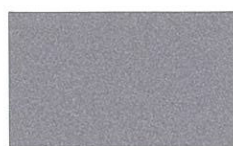
METALLIC MATT



Pewter Grey **908**



Rocky Grey **909**



Executive Grey **918**



Faded Lilac **916**



Sparkle Violet **919**



Cherry Berry **917**



Muddy Brown **921**



Forest Green **303**



Neptune Blue **903**



Storm Blue **914**

For more colour selection, kindly refer to Nippon Paint Metallic Collection Colour Card.
请参阅 Nippon Paint Metallic Collection Colour Card 以获取更多的颜色。

WOOD VARNISH



Golden Pine **T103**



Rust **T105**



Redwood **T107**



Teak **T104**



Beech **T106**



Oak **T111**



Mahogany **T102**



Rosewood **T108**



Meranti **T101**



Charcoal **T110**

For more colour selection, kindly refer to Nippon Paint Wood & Metal Collection Colour Card.
请参阅 Nippon Paint Wood & Metal Collection Colour Card 以获取更多的颜色。

RECONDITIONING & TOUCH UP



Suitable for reconditioning, refurbishment or touch-up for school bus, air-con and photocopy machine.
适用于翻新及修饰校巴、冷气及复印机。



Pure White **100**



Milk White **1118**



Almond White **7305**



Creamy Grey **5245**



Yellow **108**



Black **109**

All colours shown in this colour card are as close to actual Nippon Paint colours as modern printing techniques permit.
根据现代印刷技术允许，以上所有显示颜色与 Nippon Paint 的真实颜色相近。



PROTECTION

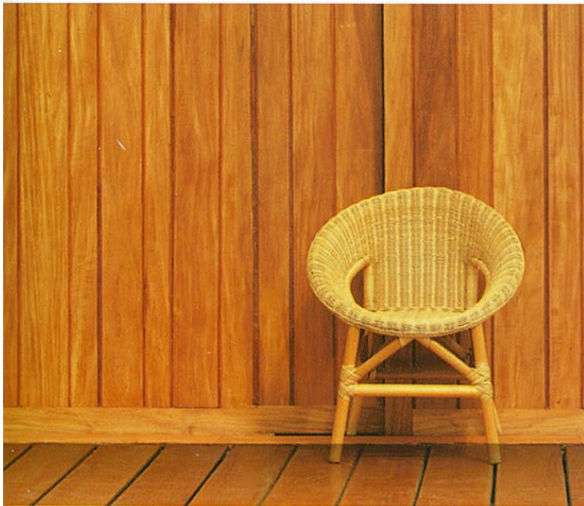


Give surface an always-new look with this UV-protective clear coat.

紫外线防护清漆让表面一直保持崭新的面貌。

Clear

01



ANTI-RUST



Specially formulated as protective, anti-rust & anti-corrosion primer for bare metal surfaces.

特制抗锈配方底漆，适用于未经处理的金属表面。

Anti-Rust Brown

12



*Not suitable to use together with varnish colours and heat resistant topcoat.
*不适合与清漆及抗高温漆一同使用。



HEAT RESISTANT

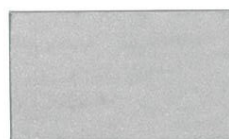


Highly resistant to temperature up to 600°C. Suitable to withstand high heat temperature equipments and surfaces.

Protect iron and steel surfaces from weathering and corrosion.
抗高达600°C高温，适用于需承受高温的器材及表面，
同时保护铁钢免受损于气候变化及腐蚀。

Silver

709



Black

708





PYLOX

COLLECTION

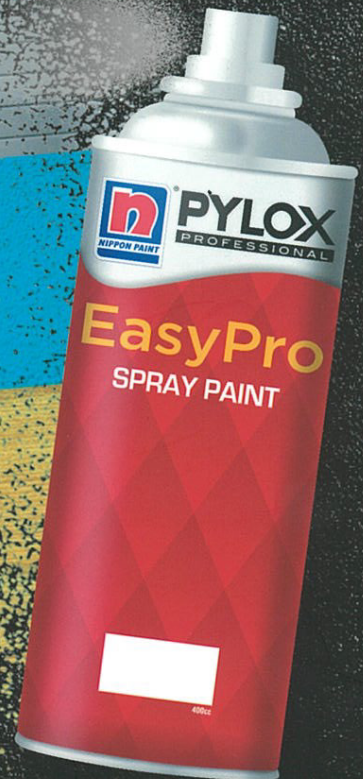
EASY & DURABLE
SPRAY PAINT



Metal

Wall

Wood



Fast application • Uniform coverage • Smooth finish
• Ideal for painting hard-to-reach areas