



**Momento**<sup>™</sup>  
Special Effect Paint

*Designer*  
SERIES



Scan to unlock new inspirations by  
Nippon Momento™ Special Effect Paint.



**Momento**<sup>™</sup>  
Special Effect Paint

*Designer*  
SERIES

A sophisticated line of professional special effect paint that masterfully mimics the extraordinary beauty of real-life textures with new special effects for a whole new spectrum of unlimited creativity.

# RUST BOX

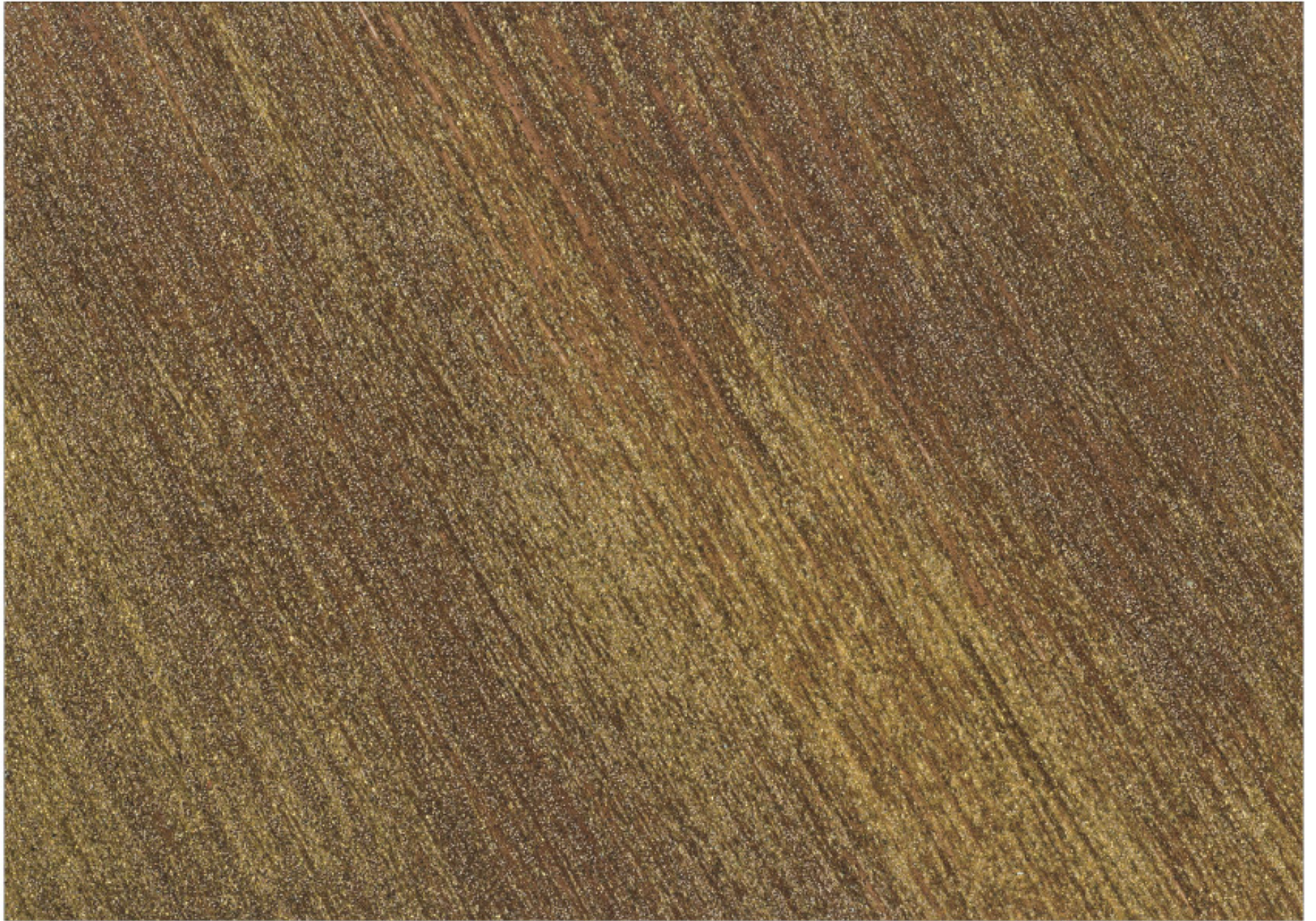
Inspired by the natural patterns and palettes of distressed metals and corroding rust, traditional industrial chic gets a modern twist with this unique collection of special effect paint.

Rust base  
Glazed over with

**Fire Powder** RB 188  
**Sunny Days** CG 183



**WATCH AND LEARN**  
Scan to learn how to create Rust Box.



Rust base  
Glazed over with

Fire Powder  
Sunny Days

RB 188  
CG 183

# Rust Box



Rust base  
Glazed over with

**Fire Powder**  
**Sunny Days**

**RB 188**  
**CG 183**



Rust base  
Glazed over with

**Copper Coffee**  
**Royal Flush**

**RB 189**  
**CG 184**



Rust base  
Glazed over with

**Cool Lava**  
**Sunkissed Citrus**

**RB 190**  
**CG 186**

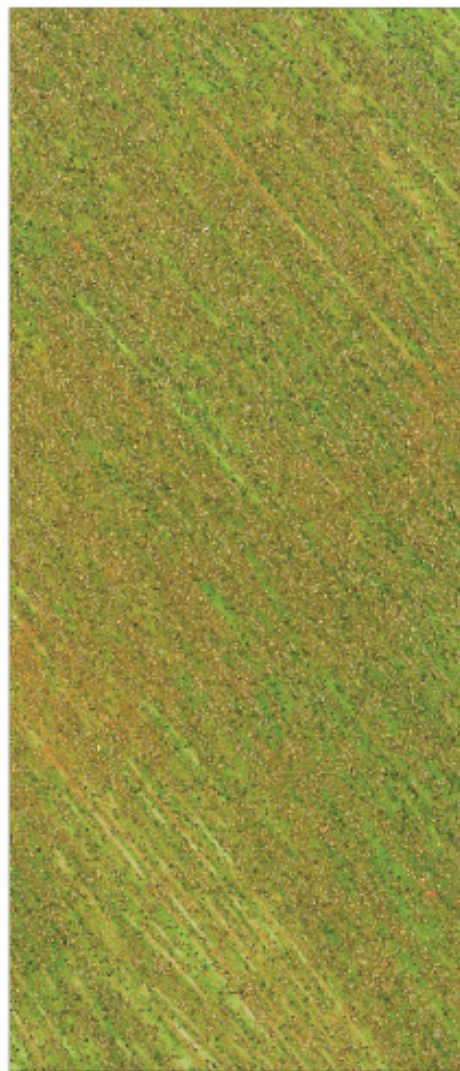
*\*All colours shown are as close to the actual Nippon Paint colours as modern printing techniques permit. Colour appearance/finishing will vary according to amount of coats, style of strokes applied and individual painting methods.*



Rust base  
Glazed over with

**Topaz Honey**  
**Modern Mojito**

**RB 191**  
**CG 185**



Rust base  
Glazed over with

**Verdigris Shine**  
**Royal Flush**

**RB 192**  
**CG 184**



Rust base  
Glazed over with

**Rustique**  
**Modern Mojito**

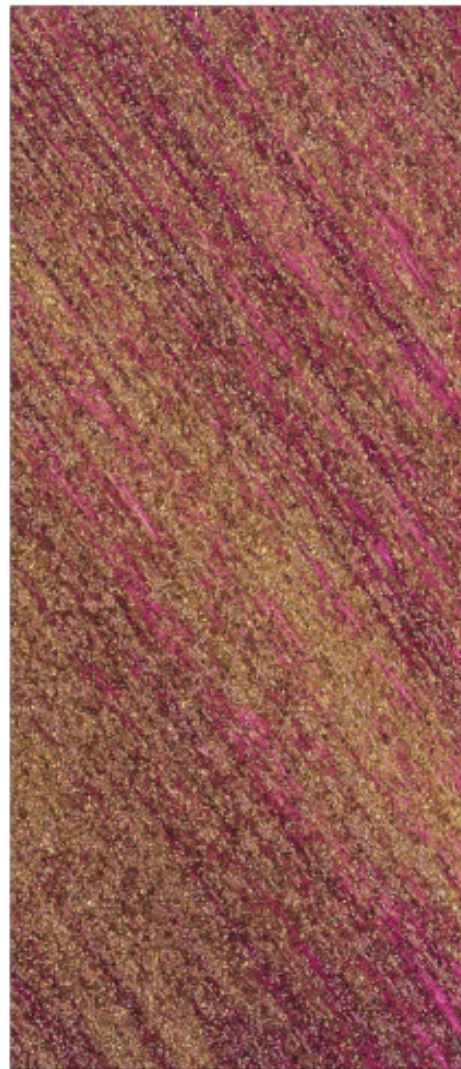
**RB 193**  
**CG 185**

*\*All colours shown are as close to the actual Nippon Paint colours as modern printing techniques permit. Colour appearance/finishing will vary according to amount of coats, style of strokes applied and individual painting methods.*

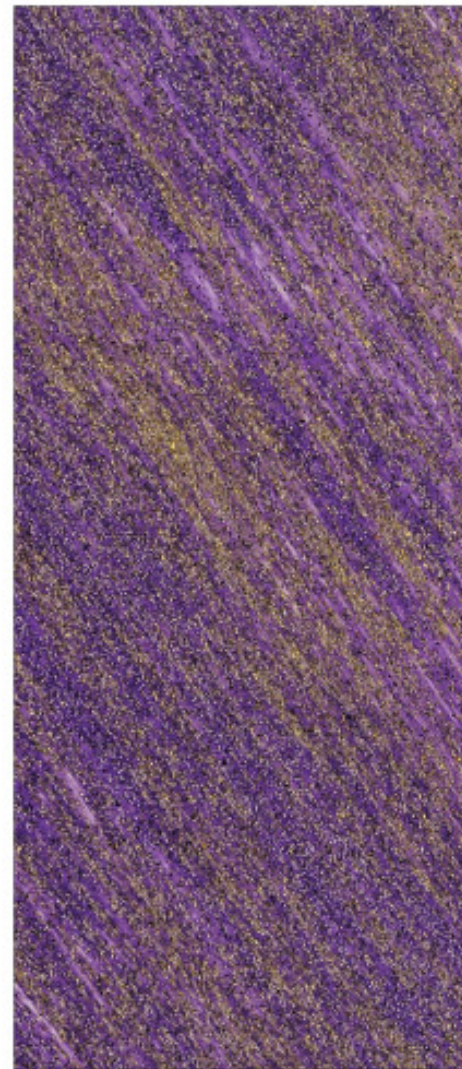
# Rust Box



Rust base  
Glazed over with **True Rust** **RB 194**  
**Royal Flush** **CG 184**



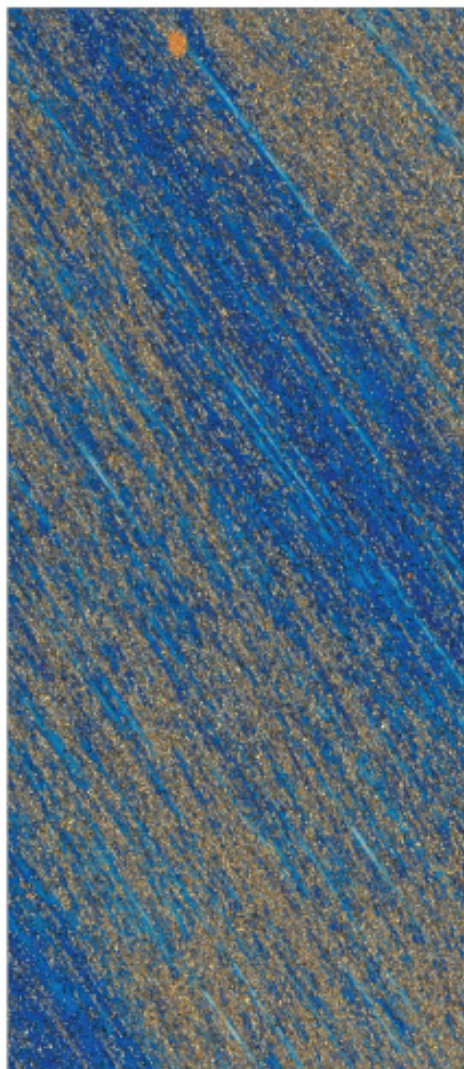
Rust base  
Glazed over with **Raspberry Rust** **RB 195**  
**Modern Mojito** **CG 185**



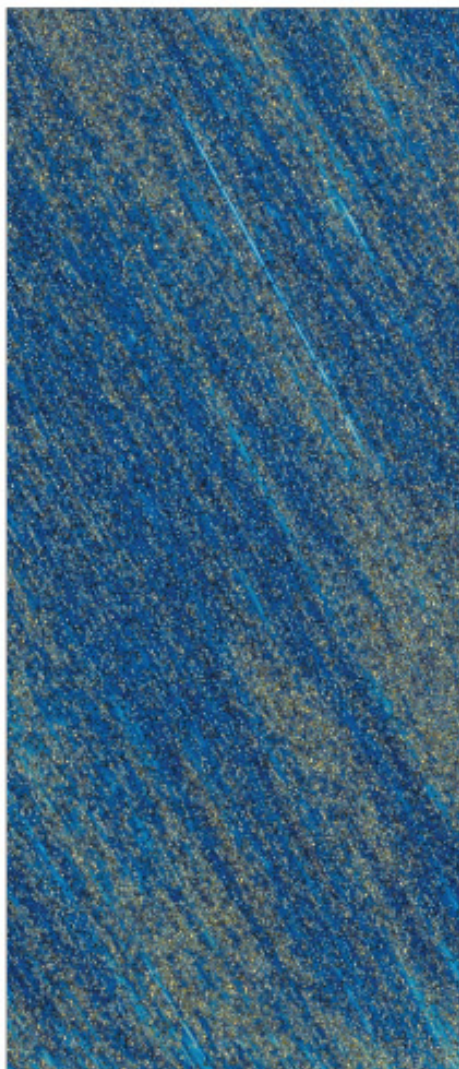
Rust base  
Glazed over with **Amethyst Heart** **RB 196**  
**Modern Mojito** **CG 185**

*\*All colours shown are as close to the actual Nippon Paint colours as modern printing techniques permit. Colour appearance/finishing will vary according to amount of coats, style of strokes applied and individual painting methods.*

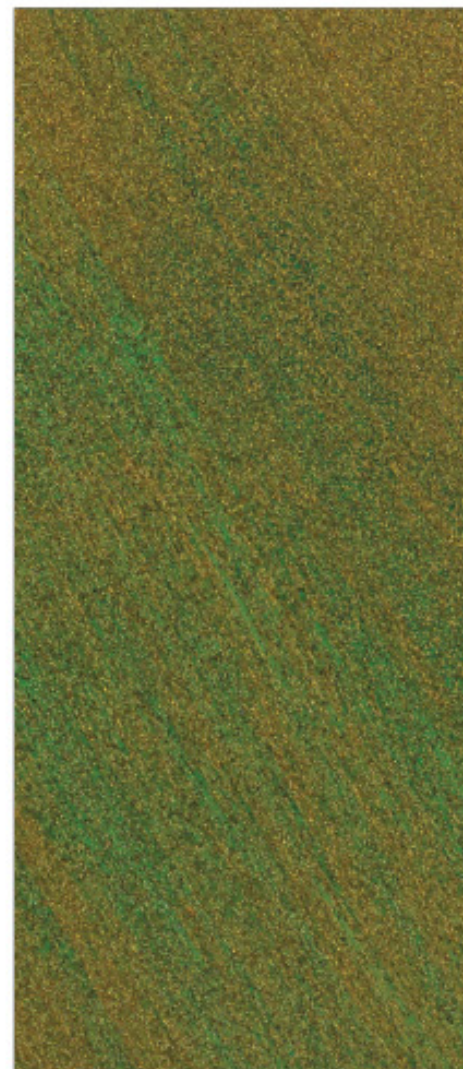




Rust base                      **Sapphire Night**                      **RB 197**  
Glazed over with                      **Royal Flush**                      **CG 184**



Rust base                      **Cobalt Glory**                      **RB 198**  
Glazed over with                      **Modern Mojito**                      **CG 185**



Rust base                      **Ultra Emerald**                      **RB 199**  
Glazed over with                      **Royal Flush**                      **CG 184**

*\*All colours shown are as close to the actual Nippon Paint colours as modern printing techniques permit. Colour appearance/finishing will vary according to amount of coats, style of strokes applied and individual painting methods.*

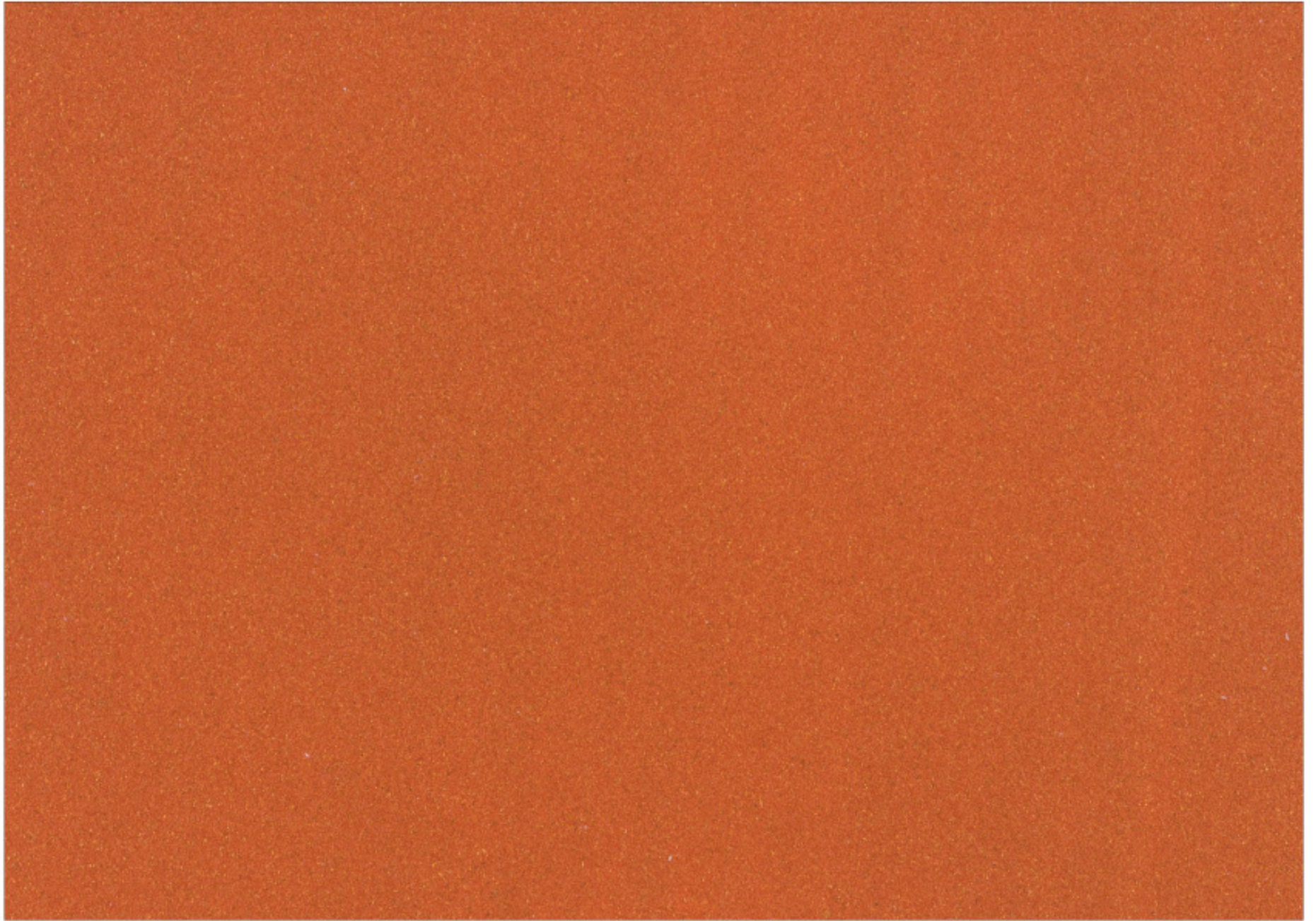
# VELVET GOLD

Flecked with gold and rich with drama, soft and sensual textures of velvety suede exude subtle golden glow for a unique and distinctive finish.

□ Base colour **Tribal Art** NP YO 1226D (7093D)  
Finished with **Clementine Crush** VG 204

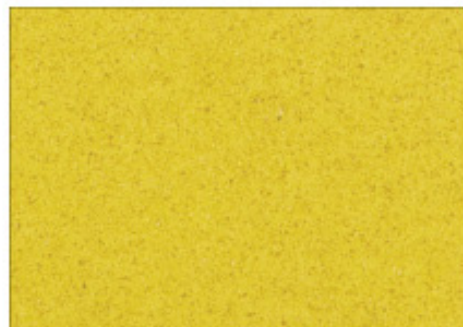


**WATCH AND LEARN**  
Scan to learn how to apply Velvet Gold.



Base colour Tribal Art NP YO 1226D (7093D)  
Finished with Clementine Crush VG 204

# Velvet Gold



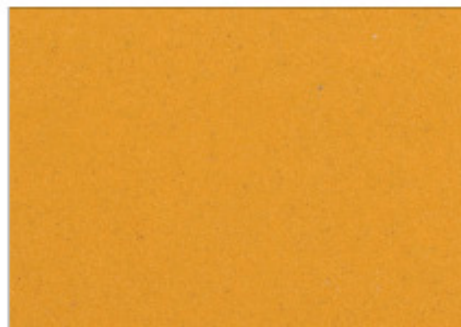
Base colour **Sweet Yellow** NP YO 1143T (70247)  
Finished with **Golden Top** VG 200



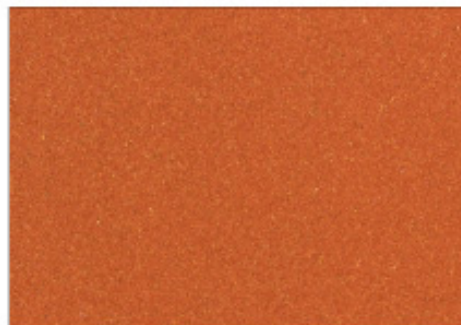
Base colour **Sassy Yellow** NP YO 1120D (70130)  
Finished with **Golden Sunshine** VG 203



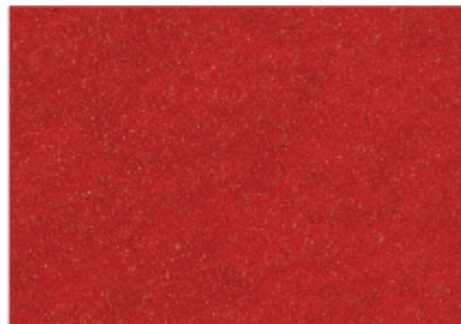
Base colour **Capito's Gold** NP YO 1169D (50330)  
Finished with **Pure Gold** VG 206



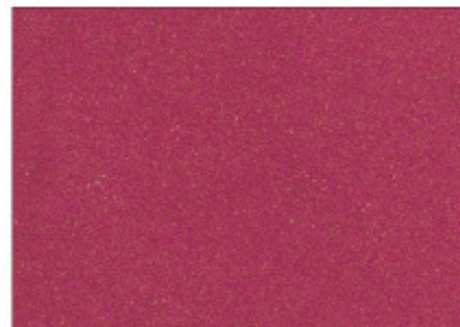
Base colour **Leap of Faith** NP YO 1190A (2534)  
Finished with **Tangerine Touch** VG 201



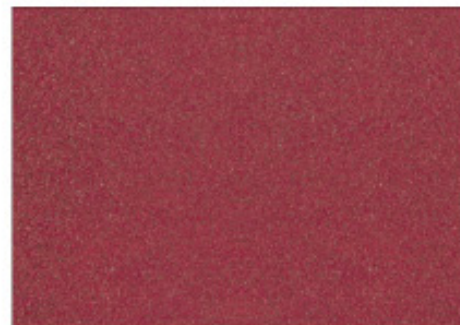
Base colour **Tribal Art** NP YO 1226D (70930)  
Finished with **Clementine Crush** VG 204



Base colour **Diva** NP R 1267A (2624)  
Finished with **Scarlet Kiss** VG 207



Base colour **Pink Floss** NP AC 2080A (2724)  
Finished with **Amber Nectarine** VG 202



Base colour **Pink Floss** NP AC 2080A (2724)  
Finished with **Berry Treasure** VG 205

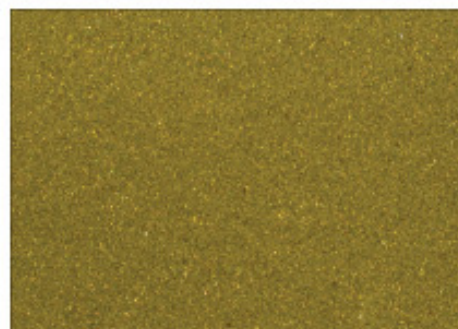


Base colour **Burgundy** NP R 1351A (1824)  
Finished with **Golden Heart** VG 208

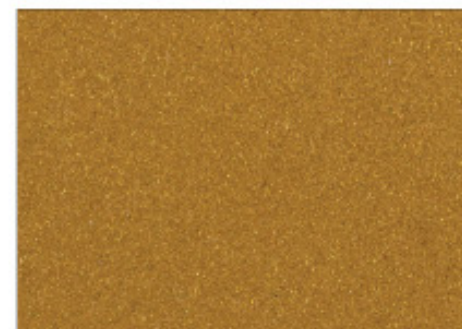
\*All colours shown are as close to the actual Nippon Paint colours as modern printing techniques permit. Colour appearance/finishing will vary according to amount of coats, style of strokes applied and individual painting methods.



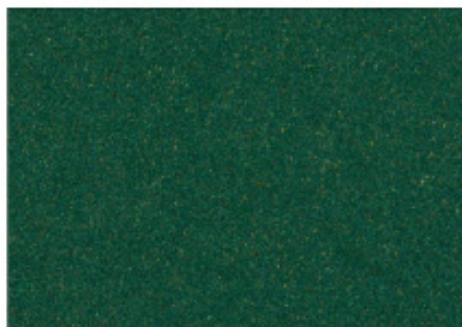
Base colour **Spun Green** NP BGG 1623T (11247)  
Finished with **Golden Apple** VG 209



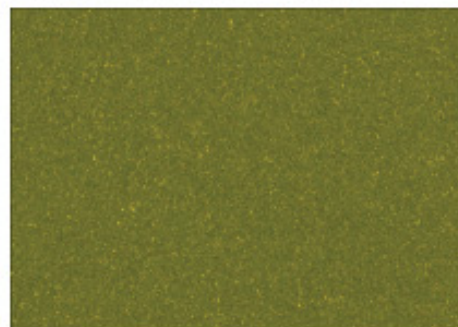
Base colour **Miranda Green** NP BGG 1735T (20647)  
Finished with **Olive Twist** VG 210



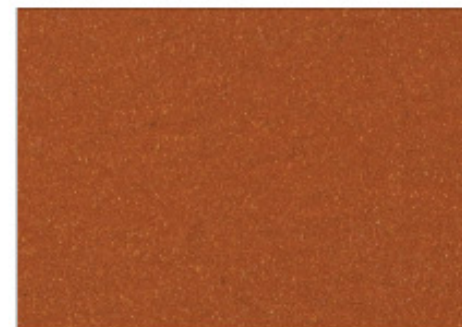
Base colour **Natural Oak** NP N 1871T (40527)  
Finished with **Ochre Glint** VG 211



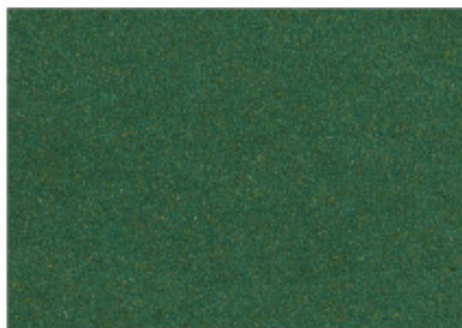
Base colour **Aegean Sea** NP BGG 1597D (71532)  
Finished with **Christmas Tree** VG 212



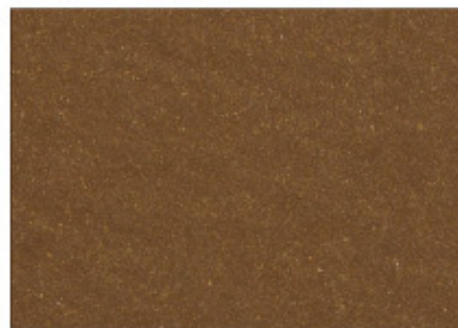
Base colour **Patchwork** NP BGG 1722A (20520)  
Finished with **Lime Royale** VG 213



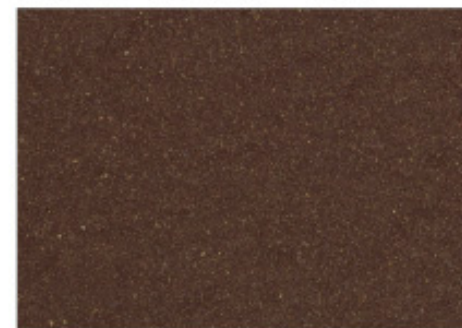
Base colour **Caramel Twirl** NP AC 2140A (7764)  
Finished with **Terracotta Sun** VG 214



Base colour **Green Abyss** NP BGG 1799A (1044)  
Finished with **Emerald Gold** VG 215



Base colour **Friar Tuck** NP N 1869A (7334)  
Finished with **Deep Olive** VG 216



Base colour **Red Earth** NP R 1379A (1434)  
Finished with **Chocolate BonBon** VG 217

\*All colours shown are as close to the actual Nippon Paint colours as modern printing techniques permit. Colour appearance/finishing will vary according to amount of coats, style of strokes applied and individual painting methods.

# VELVET PEARL

The plush special effect paint replicates the soft and sensual textures of velvety suede to give walls a unique and distinctive finish with a soft pearlescent glow.

Base colour **Tempest Sea** NP AC 2107A (162A)  
Finished with **Cobalt Cabana** VP 243



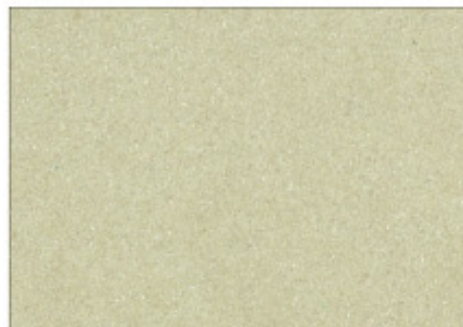
**WATCH AND LEARN**  
Scan to learn how to apply Velvet Pearl.



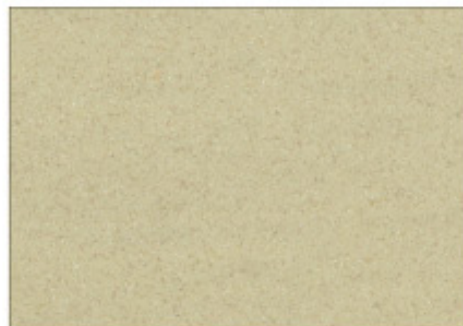


Base colour    Tempest Sea    NP AC 2107A (1624)  
Finished with    Cobalt Cabana    VP 243

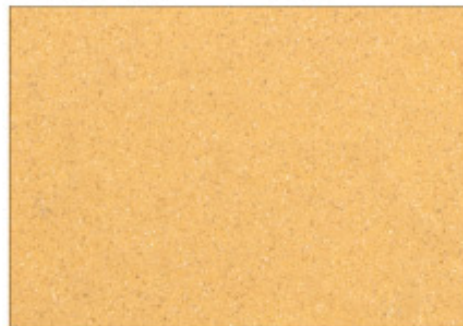
# Velvet Pearl



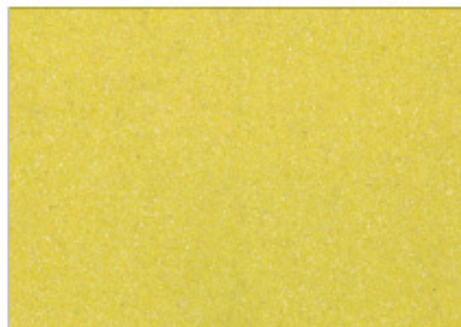
Base colour **Hush White** NP OW 1003P (OW 22 1P)  
Finished with **Icicle** VP 218



Base colour **Intimate White** NP OW 1007P (OW 21 3P)  
Finished with **Purity** VP 221



Base colour **Paris Perfume** NP YO 1249P (Y062P)  
Finished with **Champagne Sparkle** VP 224



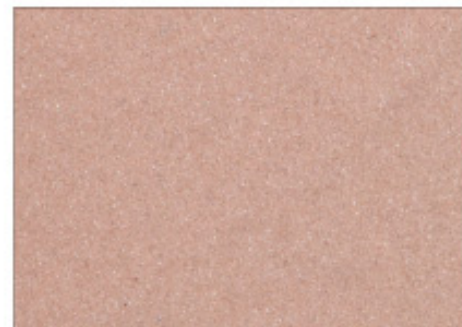
Base colour **Yellow Ring** NP YO 1126T (Y024T)  
Finished with **Lemon Cream** VP 219



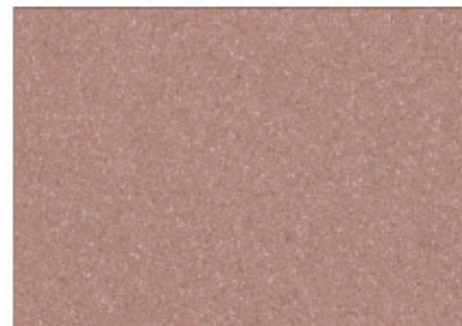
Base colour **Circus Top** NP YO 1134A (Y051A)  
Finished with **Yellow Submarine** VP 222



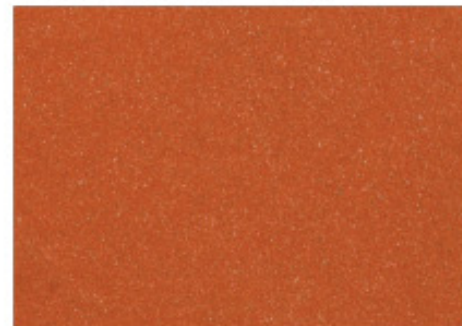
Base colour **Marsh Marigold** NP YO 1156D (Y043D)  
Finished with **Sunflower Shower** VP 225



Base colour **Home Sweet Home** NP R 1271P (R103P)  
Finished with **Vintage Pearls** VP 220



Base colour **Felicia Rose** NP OW 1040P (OW 40 2P)  
Finished with **Dusk Blush** VP 223



Base colour **Tribal Art** NP YO 1226D (Y093D)  
Finished with **Oooooorange** VP 226

\*All colours shown are as close to the actual Nippon Paint colours as modern printing techniques permit. Colour appearance/finishing will vary according to amount of coats, style of strokes applied and individual painting methods.

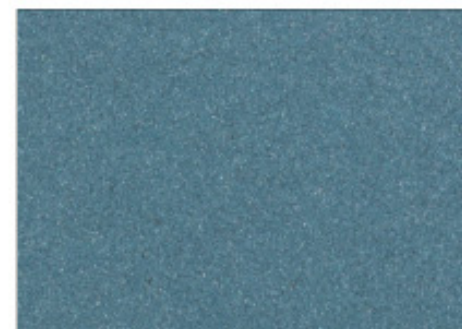




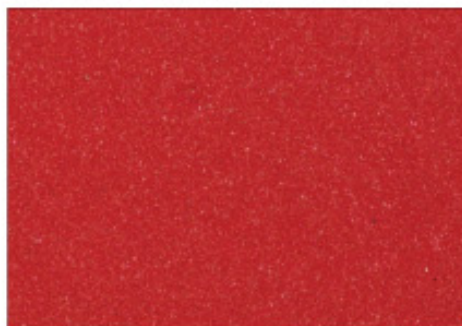
Base colour  
Finished with **C'est La Vie  
Frisky Fuschia** NP R 1308P (71847)  
VP 227



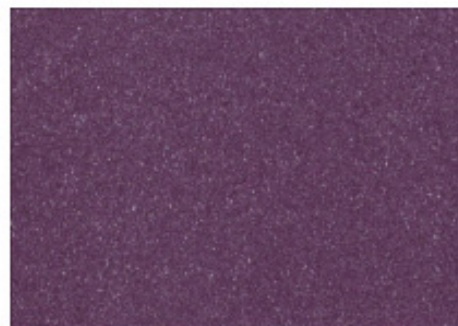
Base colour  
Finished with **Heather Spray  
Mauve Over** NP PB 1454P (51857)  
VP 228



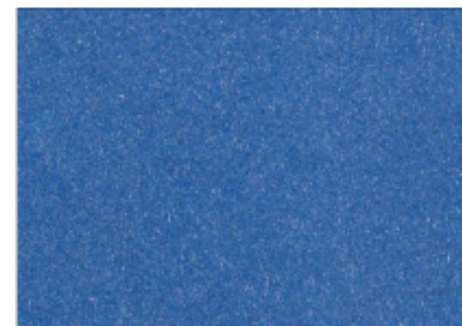
Base colour  
Finished with **Blue Wool  
Aquasparkle** NP BGG 1572D (62337)  
VP 229



Base colour  
Finished with **Fire Princess  
Be My Valentine** NP R 1268D (71030)  
VP 230



Base colour  
Finished with **Pure Addiction  
Grapezilia** NP PB 1420D (51600)  
VP 231



Base colour  
Finished with **Barbara Blue  
Sparkling Sky** NP PB 1525T (72947)  
VP 232



Base colour  
Finished with **Remember Rose  
Wine Stain** NP R 1345D (51330)  
VP 233



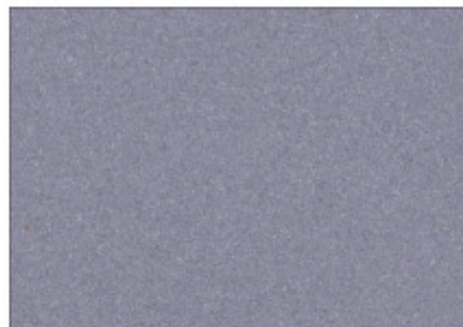
Base colour  
Finished with **Prophetic Purple  
Royal Twinkle** NP PB 1436D (71830)  
VP 234



Base colour  
Finished with **Dynasty  
Midsomer's Eve** NP PB 1505A (2434)  
VP 235

\*All colours shown are as close to the actual Nippon Paint colours as modern printing techniques permit. Colour appearance/finishing will vary according to amount of coats, style of strokes applied and individual painting methods.

# Velvet Pearl



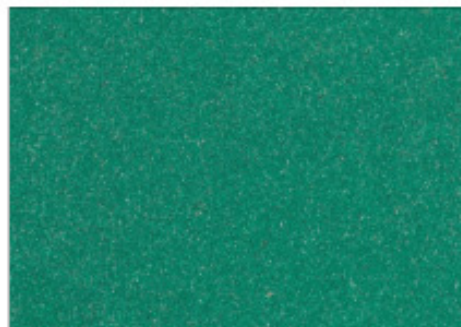
Base colour **Royal Mist** NP PB 1474P (7193P)  
 Finished with **Silver Drama** VP 236



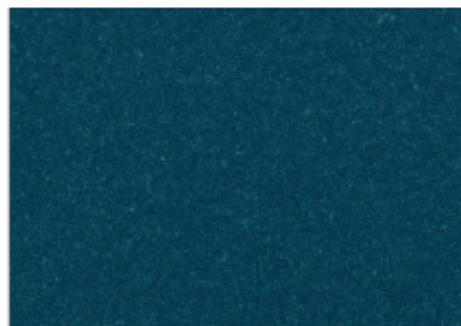
Base colour **Lady Di** NP PB 1476T (7194T)  
 Finished with **London Nights** VP 239



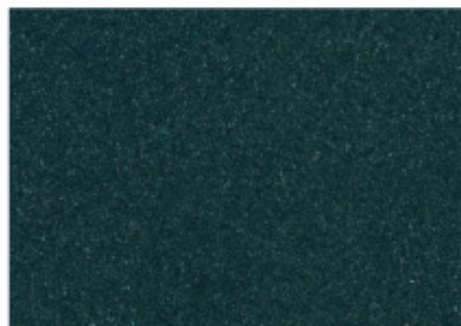
Base colour **Blue Award** NP PB 1520D (7223D)  
 Finished with **Moonlit Midnight** VP 242



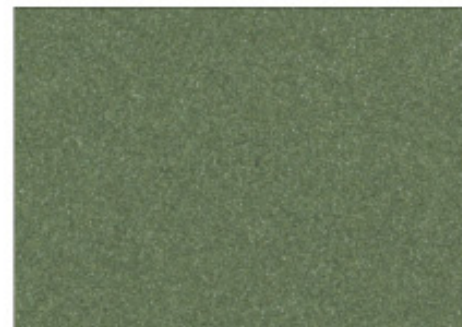
Base colour **Lush** NP BGG 1605T (1142T)  
 Finished with **Mint Wrap** VP 237



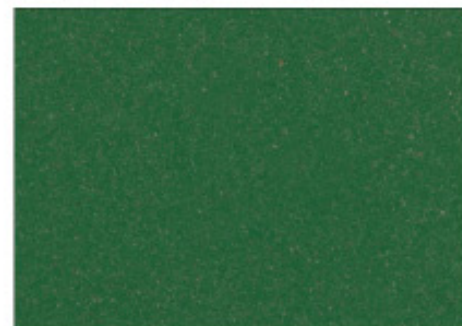
Base colour **Harbour** NP AC 2106A (121A)  
 Finished with **Peacock Plume** VP 240



Base colour **Tempest Sea** NP AC 2107A (162A)  
 Finished with **Cobalt Cabana** VP 243



Base colour **Young Tea Leaves** NP BGG 1642P (1105P)  
 Finished with **Appletini** VP 238



Base colour **Mythology** NP AC 2112A (63A)  
 Finished with **Green Queen** VP 241



Base colour **Mythology** NP AC 2112A (63A)  
 Finished with **Treetop Twinkle** VP 244

\*All colours shown are as close to the actual Nippon Paint colours as modern printing techniques permit. Colour appearance/finishing will vary according to amount of coats, style of strokes applied and individual painting methods.



Base colour **Yellow Tulip** NP YO 1089P (2013F)  
Finished with **Butter Glaze** VP 245



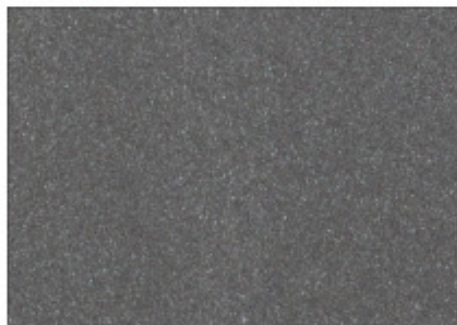
Base colour **Basket Straw** NP BGG 1710T (2022T)  
Finished with **Shortbread Sugar** VP 248



Base colour **Capitol's Gold** NP YO 1169D (2033D)  
Finished with **Golden Coin** VP 251



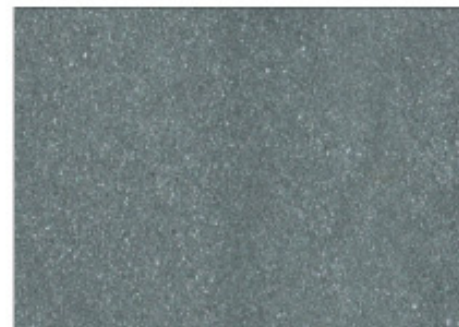
Base colour **Hush White** NP OW 1003P (2022 1P)  
Finished with **Winter's Breath** VP 246



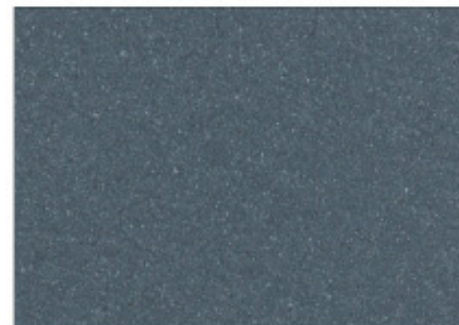
Base colour **Gray Dolphin** NP N 2046P (2246P)  
Finished with **Smokey Silver** VP 249



Base colour **Smithy Tool** NP N 1997T (2327)  
Finished with **Frosty Fog** VP 252



Base colour **Lake Stone** NP N 2000P (2241P)  
Finished with **Perfect Pewter** VP 247



Base colour **Miner Gray** NP N 2004T (2242T)  
Finished with **Gray Goose** VP 250



Base colour **Trojan Gray** NP N 1996D (233D)  
Finished with **Stonewash** VP 253

# VELVET METALLIC

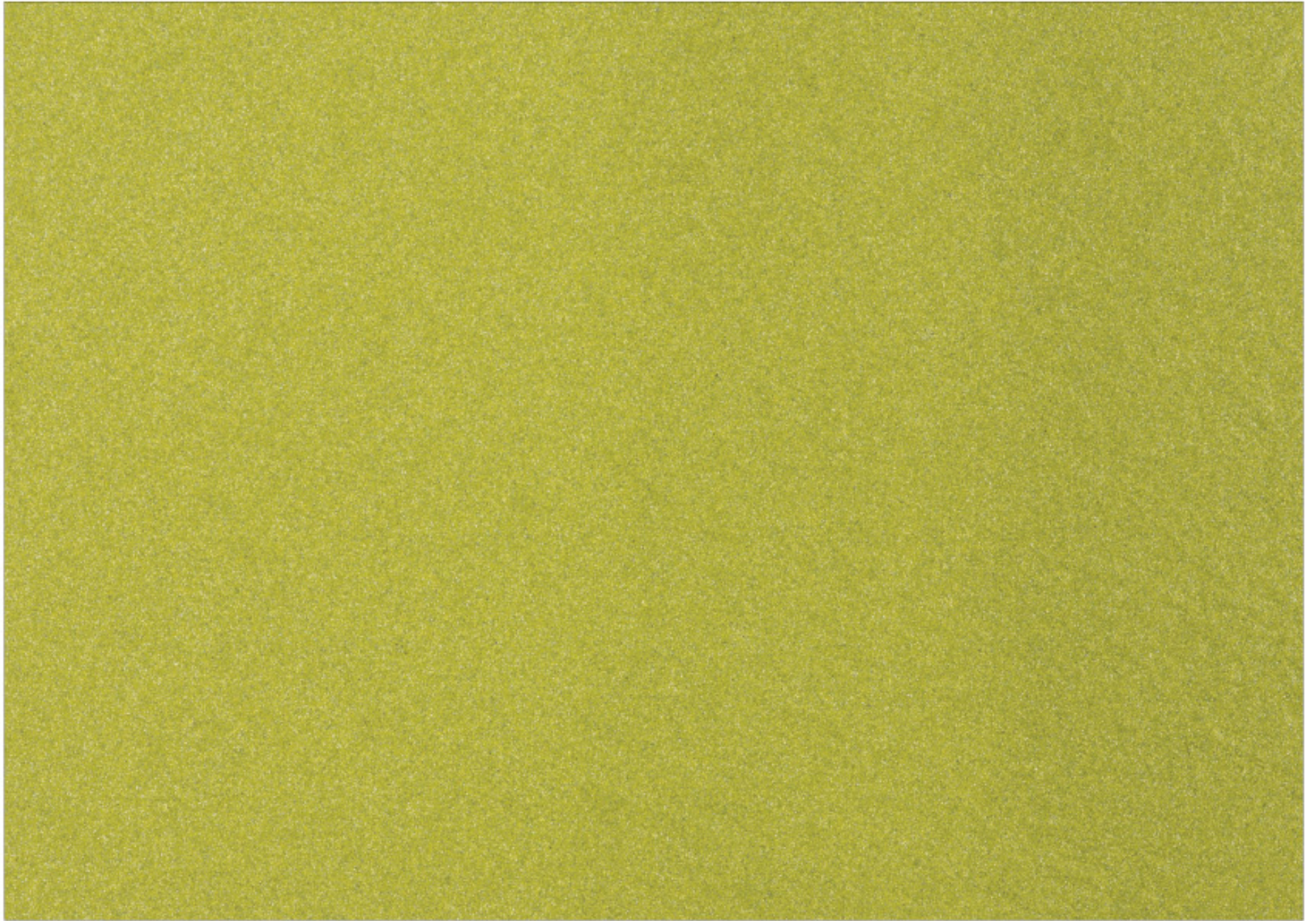
Cool and futuristic, this plush special effect paint is charged with metallic gleam while replicating the soft and sensual textures of distinctive velvety suede.

□ Base colour    **Sunray**    NP YO 1114A (11A)  
Finished with   **Almond Joy**   VM 273



**WATCH AND LEARN**  
Scan to learn how to apply Velvet Metallic.





Base colour Sunray NP YO 1114A (11A)  
Finished with Almond Joy VM 273

# Velvet Metallic



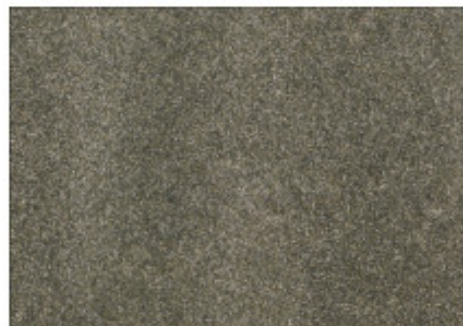
Base colour **Gray Block** NP N 2011T (42347)  
Finished with **Silver Star** VM 254



Base colour **Orange Macaron** NP YO 1227T (70947)  
Finished with **Tealights** VM 255



Base colour **Tickle Pink** NP R 1335P (51457)  
Finished with **Sweet Tart** VM 256



Base colour **Ultra Smooth** NP OW 1020P (OW 25 1P)  
Finished with **Be Dazzler** VM 257



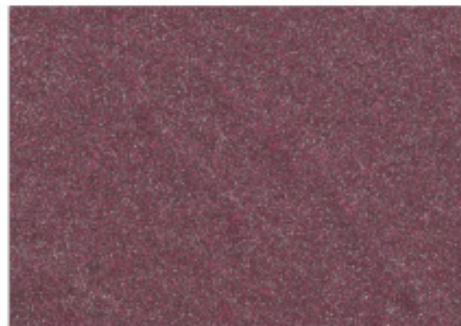
Base colour **Autumn Blaze** NP YO 1205D (70030)  
Finished with **Sunbaker Bronze** VM 258



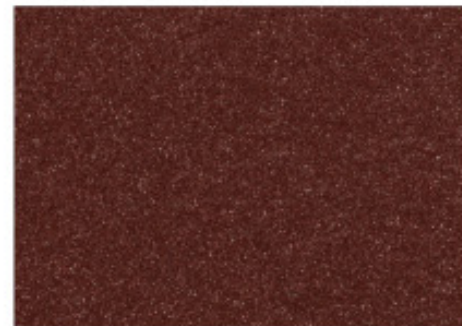
Base colour **Remember Rose** NP R 1345D (51330)  
Finished with **Crystal Rose** VM 259



Base colour **Buttermilk** NP YO 1165P (5043P)  
Finished with **Soft Glimt** VM 260



Base colour **Trailing Pink** NP R 1301T (71647)  
Finished with **Blushing Bride** VM 261



Base colour **Purplestone** NP 1896D (41630)  
Finished with **Artful Glamour** VM 262

\*All colours shown are as close to the actual Nippon Paint colours as modern printing techniques permit. Colour appearance/finishing will vary according to amount of coats, style of strokes applied and individual painting methods.



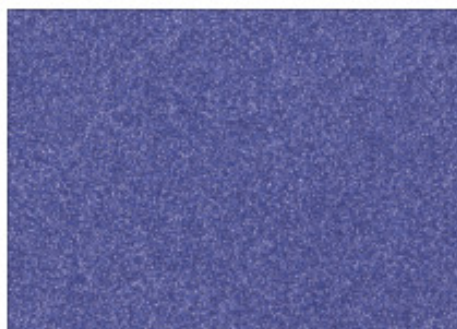
Base colour **Bouquet Violet** NP PB 1406T (71747)  
Finished with **Fairy Lights** VM 263



Base colour **C'est La Vie** NP R 1308P (71647)  
Finished with **Ice Princess** VM 266



Base colour **Wild Iris** NP PB 1401D (71637)  
Finished with **Luxe Candy** VM 269



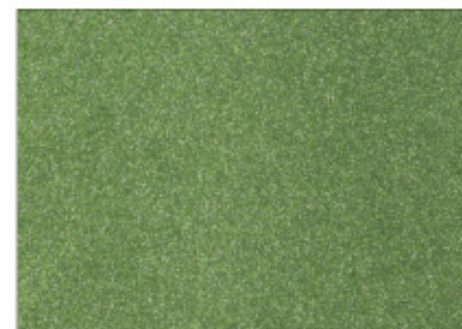
Base colour **Blue Epic** NP PB 1507T (72147)  
Finished with **Super Nova** VM 264



Base colour **Barbara Blue** NP PB 1525T (72347)  
Finished with **Blue Steel** VM 267



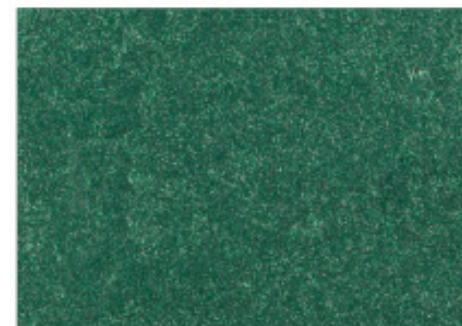
Base colour **Kind Sky** NP 1546T (72327)  
Finished with **Galactica** VM 270



Base colour **Kiwi Cut** NP BGG 1654T (70927)  
Finished with **Limelight** VM 265



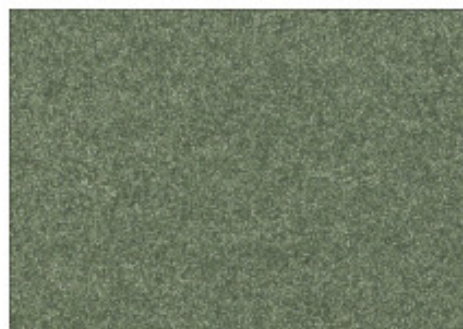
Base colour **Lush** NP BGG 1605T (71427)  
Finished with **Pine Party** VM 268



Base colour **Aegean Sea** NP BGG 1597D (71537)  
Finished with **Celebration** VM 271

\*All colours shown are as close to the actual Nippon Paint colours as modern printing techniques permit. Colour appearance/finishing will vary according to amount of coats, style of strokes applied and individual painting methods.

# Velvet Metallic



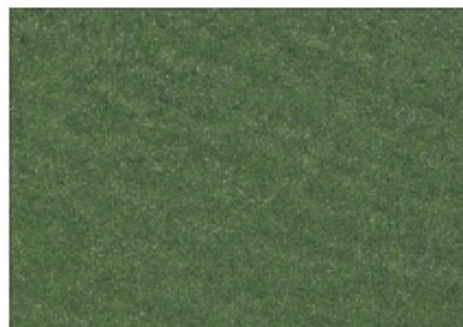
Base colour **Young Tea Leaves** NP BGG 1642P (7105P)  
Finished with **Diamond Dust** VM 272



Base colour **Sunray** NP YO 1114A (71A)  
Finished with **Almond Joy** VM 273



Base colour **Autumn Lights** NP YO 1213P (5051P)  
Finished with **Mineral Clay** VM 274



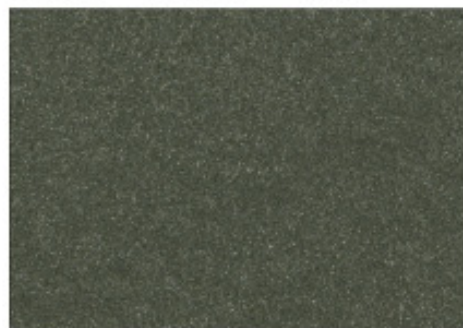
Base colour **Bamboo Leaf** NP BGG 1792A (103A)  
Finished with **Vert Metallic** VM 275



Base colour **Golden Sage** NP BGG 1709D (0033D)  
Finished with **Desert Genie** VM 276



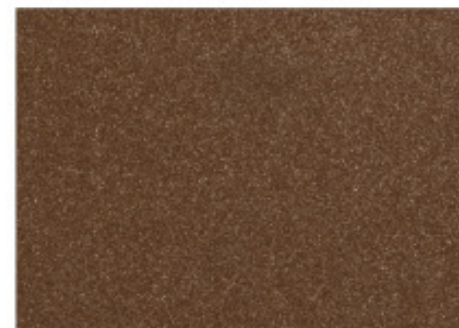
Base colour **Morsels** NP N 1863D (736A)  
Finished with **Copper Penny** VM 277



Base colour **Restful Watch** NP N 2024D (4243D)  
Finished with **Steel Wool** VM 278



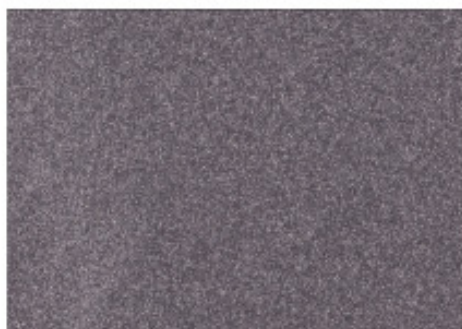
Base colour **Countertop** NP N 1840D (0013D)  
Finished with **Sahara Sand** VM 279



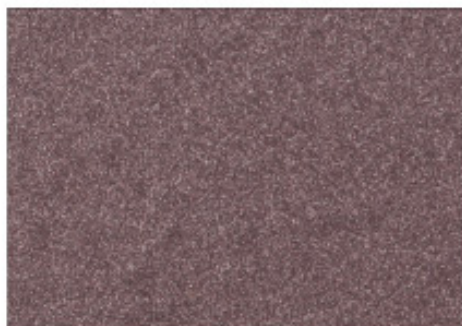
Base colour **Golden Earth** NP N 1905D (4183D)  
Finished with **Sticky Toffee** VM 280

\*All colours shown are as close to the actual Nippon Paint colours as modern printing techniques permit. Colour appearance/finishing will vary according to amount of coats, style of strokes applied and individual painting methods.





Base colour  
Finished with **Heather Spray  
Chromium Plate** NP PB 1454P (5185P)  
VM 281



Base colour  
Finished with **Crowded House  
Stone Roses** NP N 1940D (4173D)  
VM 284



Base colour  
Finished with **Stone Fence  
Glimmer Hope** NP N 2003D (3243D)  
VM 287



Base colour  
Finished with **Intimate White  
Alumina** NP OW 1007P (0W 21 2P)  
VM 282



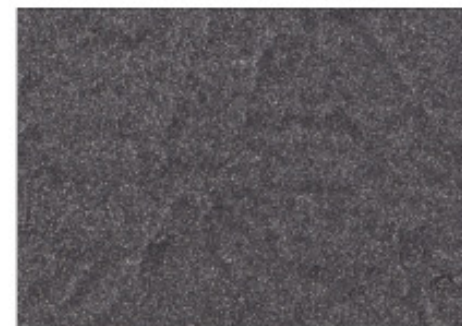
Base colour  
Finished with **Gray Chalk  
Old Victoria** NP N 2010T (4230T)  
VM 285



Base colour  
Finished with **Gray Dolphin  
Smokestack** NP N 2046P (4246P)  
VM 288



Base colour  
Finished with **Miner Gray  
Pretty Powder** NP N 2004T (3242T)  
VM 283



Base colour  
Finished with **Fountain Blue  
Gunmetal** NP N 1968 D (4208D)  
VM 286



Base colour  
Finished with **Spring Crocus  
Graphite** NP PB 1497T (7204T)  
VM 289

\*All colours shown are as close to the actual Nippon Paint colours as modern printing techniques permit. Colour appearance/finishing will vary according to amount of coats, style of strokes applied and individual painting methods.

# OPTICAL

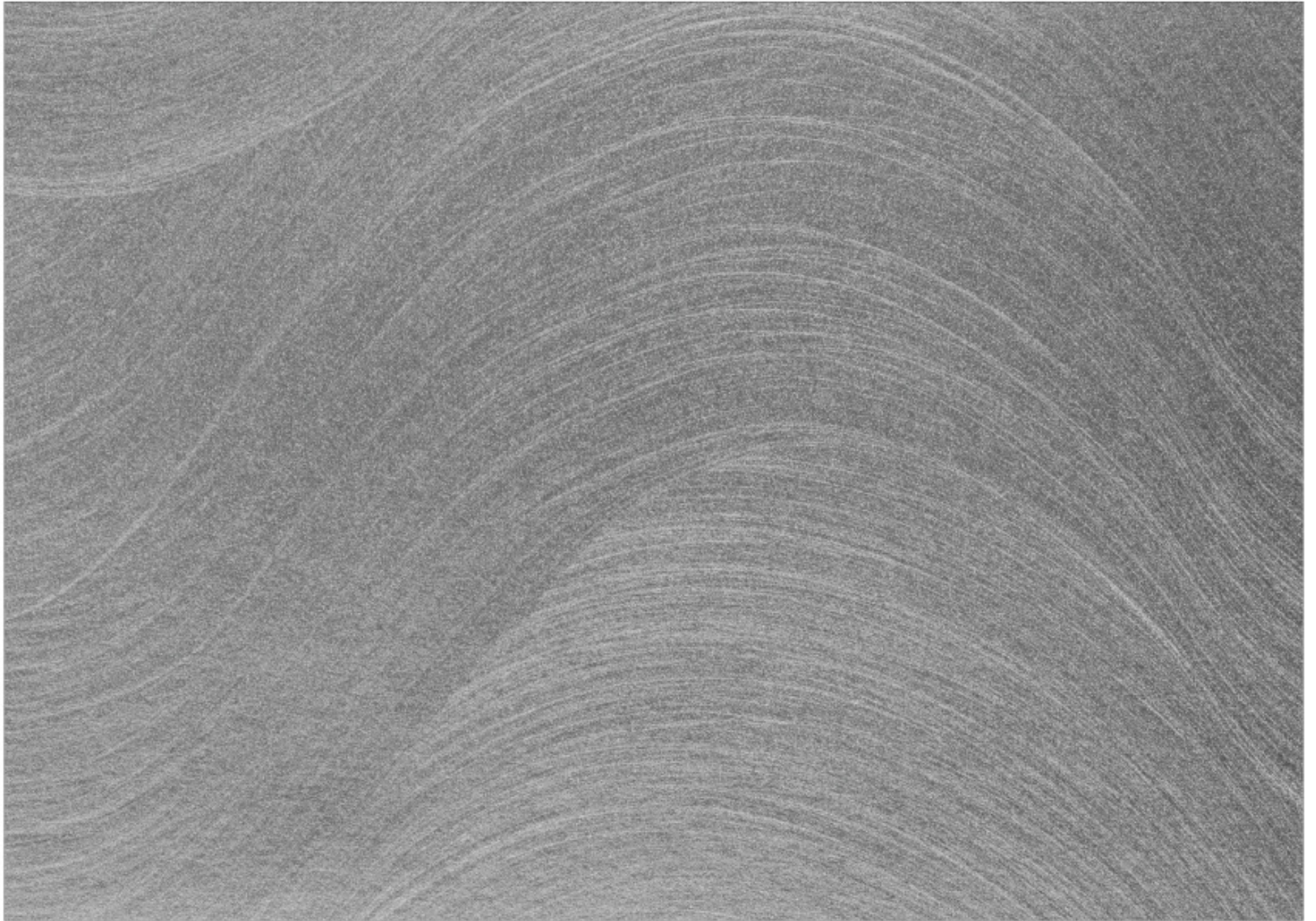
Futuristic interior design arrives in style with mirror shine and sparkling chrome special effects, expressed with a brilliant palette of ultra-metallic colours.

Man Of Steel OP 300



**WATCH AND LEARN**

Scan to learn how to create Optical effects.



# Optical



Tawny Beige OP 290



Rose Dust OP 291

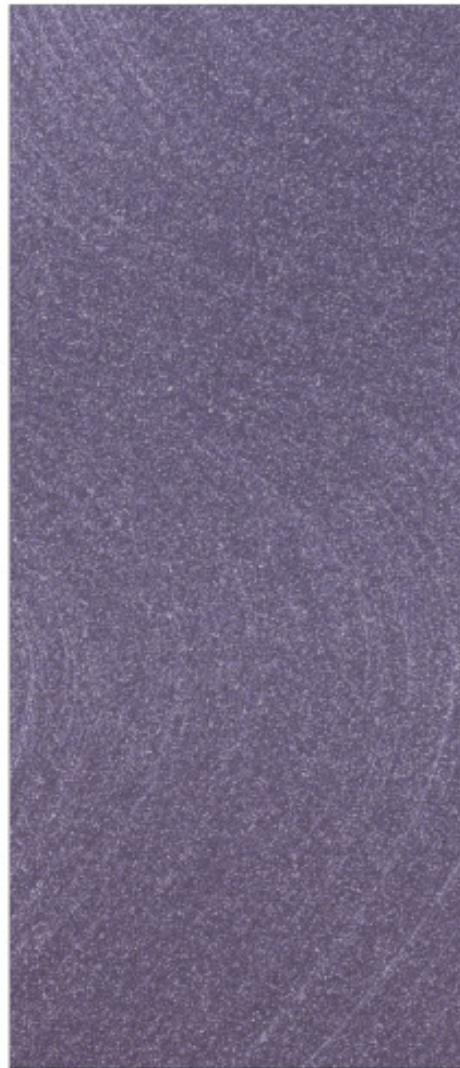


Pink Muscato OP 292

*\*All colours shown are as close to the actual Nippon Paint colours as modern printing techniques permit. Colour appearance/finishing will vary according to amount of coats, style of strokes applied and individual painting methods.*



Lilac Reflections OP 293

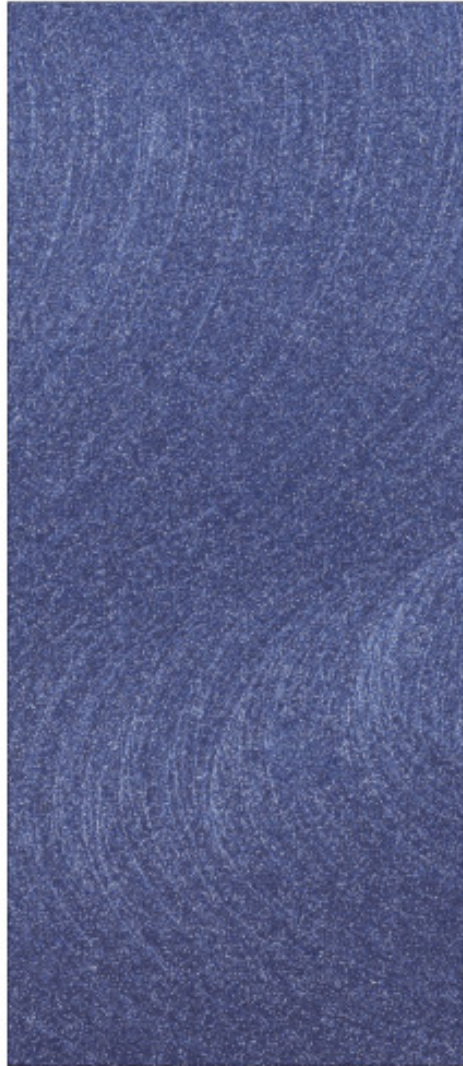


Lavender Illusion OP 294

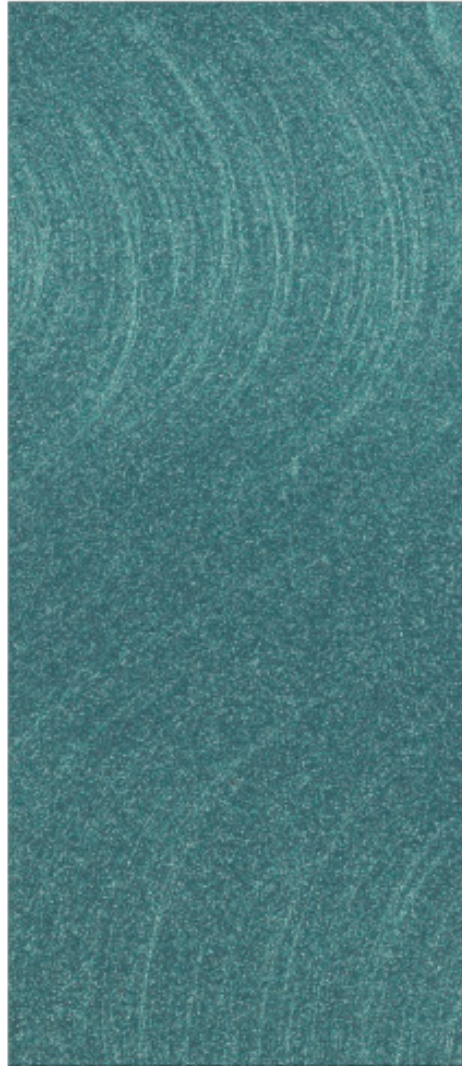


Periwinkle Pleasure OP 295

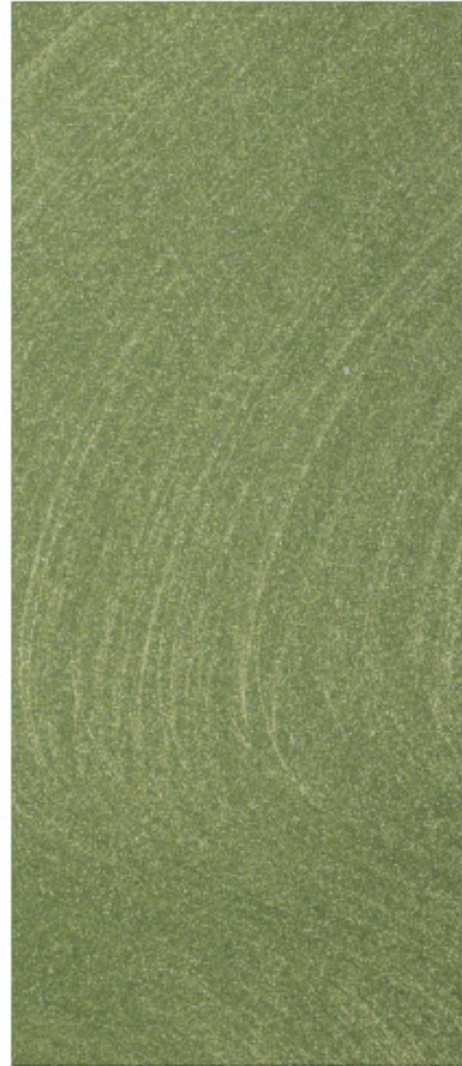
# Optical



Sky Blue High OP 296



Seismic Sea OP 297



Crisp Wintergreen OP 298



Mossy Shine OP 299



Man Of Steel OP 300



Brushed Chrome OP 301

# TRAVERTINO

This white base special effect paint lets you create a brick wall from scratch. Formulated to be easily carved, shaped or patterned; mix and match with any of your favourite colours for unsurpassed creative combinations.



**WATCH AND LEARN**

Scan to learn how to create this brick wall with Travertino.





# Travertino

## CREATIVE COMBINATIONS

With Nippon Momento™ Special Effects

- Textured Paint Series
- Enhancer Series

Flexible TRAVERTINO is specially formulated to be mixed, matched and glazed over with any of your favourite Momento™ Special Effect Paint for unparalleled masterpieces of creativity.



### DISCOVER MORE MOMENTO™ SPECIAL EFFECTS

Scan to access and view the Momento™ catalogue for Textured Paint Series and Enhancer Series.

Textured Paint Series

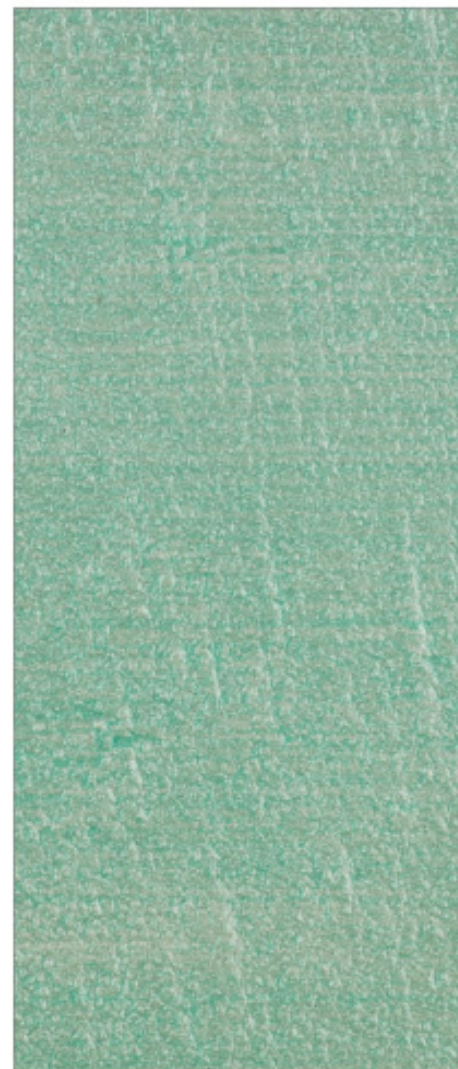


Travertino  
Glazed over with

**Introspect**

**MS 150**

Enhancer Series



Travertino  
Glazed over with

**Jade Escape**

**CP 181**

# CREATIVE COMBINATIONS

With Nippon Fibercote

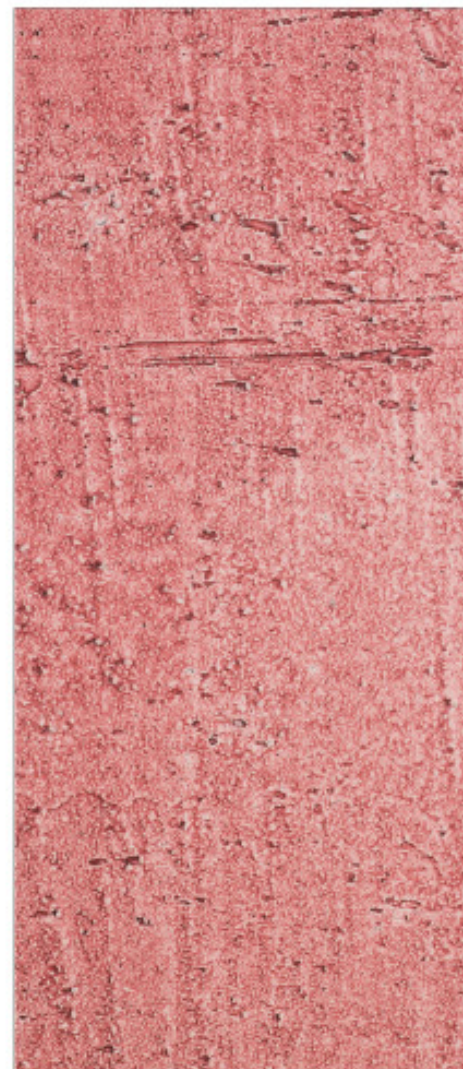
Designed for creative freedom and artistic masterpieces, TRAVERTINO can also be combined with Nippon Fibercote to create even more unique walls of every colour.



**BROWSE NIPPON FIBERCOTE COLOURS**

Scan to check out the range of colours available for Nippon Fibercote.

Fibercote



Travertino  
Glazed over with

Antique Red

T 179

# Application techniques for DESIGNER SERIES

## Surface Preparation

### REPAIR

- Remove loose, defective paint, and powdery residue.
- Repair cracks and uneven surfaces with Nippon Multi-purpose Joint Compound.

### CLEAN

- Clean the surface and let it dry.
- Ensure the surface is free from dirt, grease, and other foreign matter.

### PAINT

- Allow the surface to dry completely before painting.
- To begin, apply 1 coat of Nippon Paint's interior wall sealer (Eg: Vinilex 5200 Wall Sealer or Vinilex 5500 Wall Sealer).



Safeguard your masterpiece against dirt and water  
With 1 to 2 coats of Nippon Momento® Clear Coat

## Create your OPTICAL masterpiece



**TOOLS NEEDED:**  
Paint roller and Momento® Brush



**PRODUCT DETAILS:**  
Drying time : 1-2 hours (touch dry)  
2-4 hours (hard dry)  
Recoating time : 2-4 hours  
Coverage : 40 to 60ft<sup>2</sup> per liter



**01** Apply 1 coat of Nippon Paint's interior wall sealer onto the wall using a paint roller.

Product : Vinilex 5200 Wall Sealer or  
Vinilex 5500 Wall Sealer  
No. of coats : 1  
Tools : Paint roller



**02** Apply 1 coat of Momento® Optical.

Product : Momento® Optical  
No. of coats : 1 (first coat)  
Tools : Paint roller



**03\*** Before the paint dries, use a Momento® Brush to create designs on the surface.

Tools : Momento® Brush



**04** After 2 to 4 hours, repeat steps 2 and 3, The design created on the second layer shall be similar to the one created on the first layer.

Product : Momento® Optical  
No. of coats : 1 (second coat)  
Tools : Momento® Brush

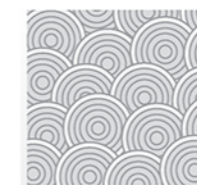


**05** Finish off with 1 to 2 layers of Momento® Clear Coat.

Product : Momento® Clear Coat  
No. of coats : 1 - 2  
Tools : Paint roller



*\*Get Creative*  
try these designs!



Scan for video instructions.

# Create your RUST BOX masterpiece



**TOOLS NEEDED:**  
Paint roller, Momento® Brush,  
and paintbrush



**PRODUCT DETAILS:**  
Drying time : 1 hour (touch dry)  
2 hours (hard dry)  
Recoating time : 1 to 2 hours  
Coverage : 40 to 60ft<sup>2</sup> per liter



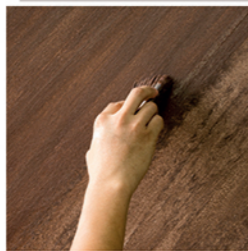
**01** Apply 2 coats of Momento® Primer onto the wall using a paint roller.

Product : Momento® Primer  
No. of coats : 2  
Tools : Paint roller



**02** Apply first coat of Momento® Rust Base, use a Momento® Brush to create 45-degree strokes in one direction. Fill in the blank spaces by painting 45-degree strokes in one direction.

Product : Momento® Rust Base  
No. of coats : 1 (first coat)  
Tools : Momento® Brush



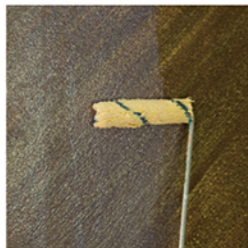
**03** After 1 to 2 hours, apply second coat of Momento® Rust Base using Momento® Brush at 45-degree strokes.

Product : Momento® Rust Base  
No. of coats : 1 (second coat)  
Tools : Momento® Brush



**04** After 1 to 2 hours, use the tip of a paintbrush to apply a thin layer of the pre-matched Momento® Enhancer Series (Cloud Gold) paint.

Product : Momento® Enhancer Series  
(Cloud Gold)  
No. of coats : 1  
Tools : Paint brush



**05** Finish off with 1 to 2 layers of Momento® Clear Coat.

Product : Momento® Clear Coat  
No. of coats : 1 - 2  
Tools : Paint roller



Scan for video instructions.

# Create your VELVET masterpiece



**TOOLS NEEDED:**  
Paint roller, putty knife, and  
Momento® Spatula, and paint tray

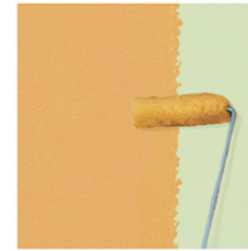


**PRODUCT DETAILS:**  
Drying time : 1-2 hours (touch dry)  
2-4 hours (hard dry)  
Recoating time : 2-4 hours  
Coverage : 40 to 60ft<sup>2</sup> per liter



**01** Apply 1 coat of Nippon Paint's interior wall sealer onto the wall using a paint roller.

Product : Vinilex 5200 Wall Sealer or  
Vinilex 5500 Wall Sealer  
No. of coats : 1  
Tools : Paint roller



**02** Apply 2 coats of the pre-matched base colour using a paint roller.

Product : Odour-less AirCare,  
Vinilex EasyWash, Satin Glo, or  
Vinilex Fresh Anti-Bacterial Emulsion  
No. of coats : 2  
Tools : Paint roller



**03** Scoop a palm-sized dollop of Momento® Velvet using a putty knife. Then, transfer it onto the paint tray

Product : Momento® Velvet  
Tools : Putty knife and paint tray



**04** Apply first coat of Momento® Velvet. After 2 to 4 hours, apply the second coat. Apply the third coat to touch up uneven areas after the second coat has dried.

Product : Momento® Velvet  
No. of coats : 3  
Tools : Momento® Spatula



**05** Finish off with 1 to 2 layers of Momento® Clear Coat.

Product : Momento® Clear Coat  
No. of coats : 1 - 2  
Tools : Paint roller



Scan for video instructions.

# Create your TRAVERTINO masterpiece



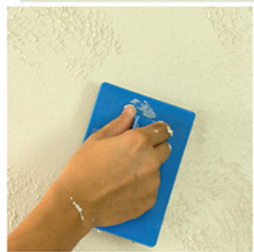
**01** Apply 1 coat of Nippon Paint's interior wall sealer onto the wall using a paint roller.

Product : **Vinilex 5200 Wall Sealer or Vinilex 5500 Wall Sealer**  
No. of coats : 1  
Tools : **Paint roller**



**02** Apply the first coat of Momento® Travertino with a stainless steel trowel and wait 2 to 4 hours before applying the next coat. Repeat this step for the second and third coat.

Product : **Momento® Travertino**  
No. of coats : 2 - 3  
Tools : **Stainless steel trowel**



**03** After 20 to 30 minutes, create irregular veins (similar to the pattern of travertine stone walls) using a hard-bristled spatula.

Tools : **Hard-bristled spatula**



**04** Smoothen the surface with a stainless steel trowel.

Tools : **Stainless steel trowel**



**05\*** Create brick, block, or weave designs with a flat-tip screwdriver.

Tools : **Flat-tip screwdriver**



**06** After 10 to 12 hours, apply topcoat or Momento® Clear Coat using a paintbrush or paint roller.

Product : **Momento® Textured Paint Series (Sparkle Silver), Momento® Enhancer Series (Cloud), Nippon Fibercote (50% dilution with water) or Momento® Clear Coat**

No. of coats : 1 - 2  
Tools : **Paintbrush**



## TOOLS NEEDED:

Paint roller, stainless steel trowel, hard-bristled spatula, flat-tip screwdriver and paintbrush



## PRODUCT DETAILS:

Drying time : 1-2 hours (touch dry)  
3 hours (hard dry)

Recoating time : 2-4 hours

Coverage : 10ft<sup>2</sup> per kg



*\*Get Creative*  
try these designs!



Scan for video instructions.



# PROTECT YOUR MASTERPIECE

Complete your Momento walls with **Momento Clear Coat**, a specially formulated topcoat designed to protect your masterpiece with a beautiful professional finish, for a lasting impression.

- Repels water
- Good durability
- Dirt resistant
- Easy to apply
- Low odour & VOC
- Water based







| Bangladesh | China | Hong Kong | India | Indonesia | Japan | Korea | **Malaysia** | Pakistan | Philippines | Singapore | Taiwan | Thailand | Vietnam |